

IDEAL 6660

max.
80
mm

Professional guillotine with EASY-CUT, automatic clamp, programmable power backgauge with touch pad and IR light beam safety curtain on the front table.

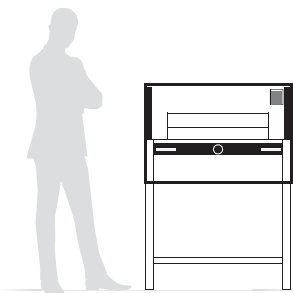
← 65 cm →

Cutting length	650 mm
Cutting height	80 mm
Narrow cut	25 mm
Table depth	610 mm



Technical specifications

Power	230 V / 50 Hz / 1~
Capacity	1.1 kW blade drive
	0.32 kW clamp drive
	0.1 kW backgauge drive



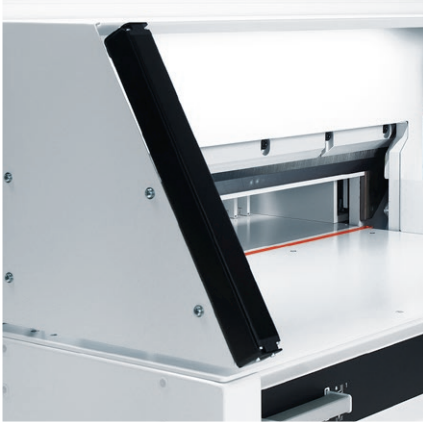
Dimensions	1293 x 992 x 1220 mm (H x W x D)
	width with side tables 1565 mm
Weight	312 kg without side tables
	321 kg with side tables

Product characteristics

Equipped with the new, patented EASY-CUT blade activating bars for convenient and safe cutting. The ergonomic working height of 94 cm guarantees effortless, fatigue-free operation. Comprehensive SCS safety package: IR light beam safety curtain on the front table; safety cover on the rear table; main switch and safety lock with key; electronically controlled true two-hand operation; 24 volt controls (low voltage); patented safety drive; automatic blade and clamp return from every position; disc brake for instant blade stop; blade changing device with covered cutting edge; blade depth adjustment from the outside of the machine; easy blade change from the front of the machine without removing covers. Electric backgauge drive with touch pad for easy setting, multilingual operator guidance and digital display. Measurement readout in cm or inches (display accurate to 1/10 mm or 1/100 inch). 99 programs with 99 steps in each program (up to 15 repeat cuts can be integrated into a program as one single program step). Program runs automatically. 10-button key pad for presetting of measurement. Pre-programmed measurements for A3 to A6 standard paper sizes. Memory key for repeat cuts. Automatic SET function for reference measurement via start button. Programmable EJECT function - for pushing out the paper. Self-diagnostic system with error indication on display. Electronic hand wheel for manual backgauge positioning with infinitely variable speed control (from very slow to very fast). Electro-mechanical blade and clamp drive. Single guided backgauge for precise positioning. Blade made of German high quality steel. Solid steel blade carrier and adjustable blade guides. Adjustable backgauge with narrow separations and plastic gliders. Optical cutting line with bright and durable LEDs. Three-step front table illumination (LEDs). Two side lays each on front and rear tables. Solid all-metal construction. Complete with stand, storage shelf, practical tool holder and stacking angle. Optional set of side tables available at an extra cost.

IDEAL 6660

Features



IR SAFETY CURTAIN

The light beam safety curtain in the working area of this professional guillotines ensures the highest level of safety and cutting convenience.



ELECTRONIC HAND WHEEL

Ideal for manual backgauge positioning, the electronic hand wheel has infinitely variable speed control from very slow to very fast.



PATENTED EASY-CUT ACTIVATING BARS

Blade and clamp can be activated independently via the two-step blade activating bars with separate trigger points for blade and clamp.



EASY-TO-USE TOUCH PAD

Extremely convenient: Electronic, programmable control module for the power backgauge with multi-lingual touch pad. 99 programs with 99 steps in each program can be stored.



PRACTICAL TOOL HOLDER

The practical hook-in tool holder is placed on the back table and keeps all necessary tools for blade change and service jobs within reach.



SAFE BLADE CHANGE

Safe and convenient blade change without removing covers. Blade changing device covers cutting edge of blade to protect the operator.



Perfect Document Creation

Unit 14a, Fleetway West Business Park
Wadsworth Road
Perivale, Middlesex
UB6 7LD

T: 020 8810 5770
F: 020 8810 9190
E: sales@pdccuk.com
W: www.pdccuk.com

