



Accel flex

The Bindomatic® Flex is a powerful, manually operated binder designed to meet any document format demand with spine lengths up to 370 mm. Bind documents as thick as 54 mm, soft covers, hard covers; this binder will bind them all and do it stronger and more effectively than any comparable manual binding system on the market, up to 15 documents per minute.

If you need to remove, replace or add sheets, simply re-heat the binding. With the wide range of Bindomatic® covers, your business presentations, reports, proposals, statements, manuals etc, will always look and feel as professional as the content and message of your document.

DOCUMENT SIZE

A5 to A3 Landscape

SYSTEM CAPACITY

Up to 540 sheets of 80 gsm paper.
Load up to 15 documents per binding cycle (~60 sec) depending on the width of the spine

DOCUMENT SPINE WIDTH

From 1.5 to 54 mm

MACHINE DIMENSIONS

L 446 x W 264 x H 133 mm

MACHINE FINISHING

Metal surface

MACHINE WEIGHT

5.5 kg

POWER SUPPLY

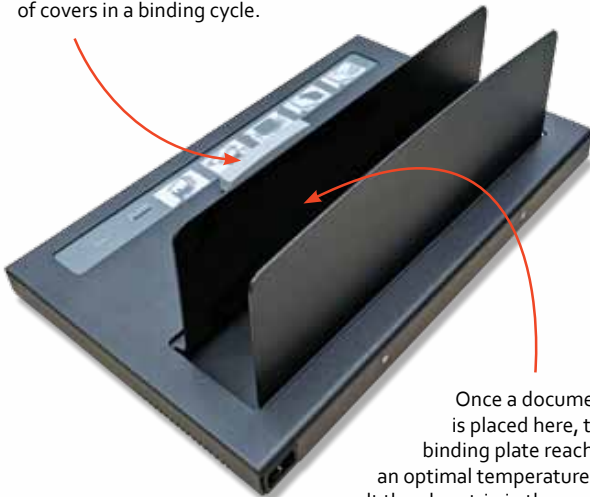
230V, 50/60Hz, 700W, 3.2 A (maximum)

360°
VIEW



Step-by-step, easy to follow instructions are on every Bindomatic Flex.

The slide manually expands and contracts depending on your document size and quantity of covers in a binding cycle.



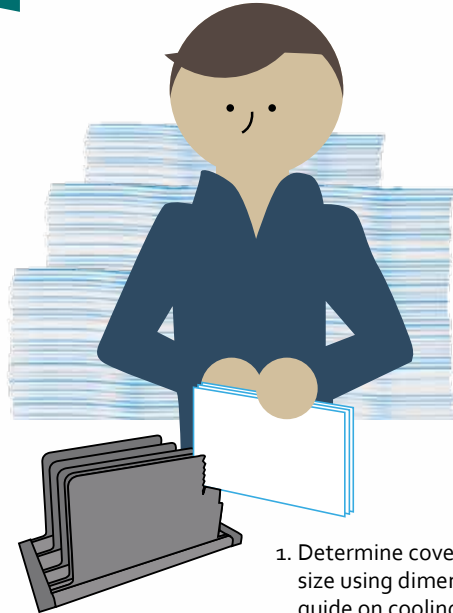
Once a document is placed here, the binding plate reaches an optimal temperature to melt the glue strip in the cover, securely binding your pages.

An indicator light, activated by a Bindomatic cover, shows when the heat is on.



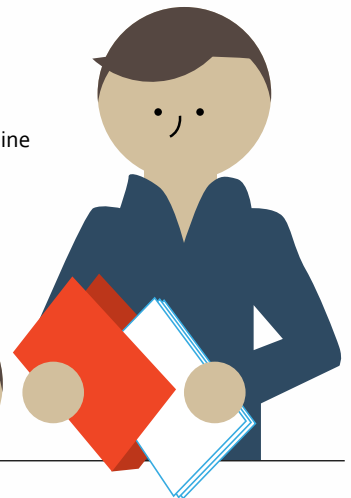
Timer indicates how long the document needs to stay on the binding plate, before manually moved to the cooling stand.

HOW IT WORKS

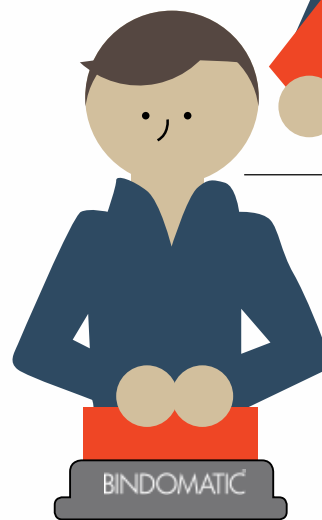


1. Determine cover spine size using dimension guide on cooling stand.

2. Place the set of papers in a Bindomatic cover, with the correct spine size, and align.



3. Bind one or several documents at a time by placing the cover — spine side down — on the heating plate.



4. Wait for the machine to signal that the thermal binding process is complete. Remove the bound document(s) and allow them to rest — spine side down — in the cooling stand for two minutes before using.